

29148723 Superdex™ 75 Increase 3.2/300



Read these instructions carefully before using the column.

Intended use

Superdex 75 Increase 3.2/300 column is intended for research use only, and shall not be used in any clinical or *in vitro* procedures for diagnostic purposes.

Safety

For use and handling of the product in a safe way, refer to the Safety Data Sheet.

Quick information

Superdex 75 Increase 3.2/300 is a prepacked high performance glass column. The glass tube is protected with a plastic outer shell. This column is intended for sensitive and high resolving size exclusion chromatography of proteins and other biomolecules in the micro preparative scale and for analytical purposes.

The column is supplied with two fingertight connectors 1/16" male for connection to ÄKTA™ or other systems. The column cannot be opened or refilled.

Table 1. Resin data

Matrix	Composite of cross-linked agarose and dextran
Particle size, d_{50v} ¹	~ 9 µm
Exclusion limit, globular proteins (M_r)	Approx. 1×10^5
Fractionation range	
globular proteins (M_r)	3000 to 70 000
dextrans (M_p)	500 to 30 000
pH stability range	
operational ²	3 to 12
CIP ³	1 to 14
Temperature	
operational	4°C to 40°C
storage	4°C to 30°C

¹ Median particle size of the cumulative volume distribution.

² pH range where resin can be operated without significant change in function.

³ pH range where resin can be subjected to cleaning- or sanitization-in-place without significant change in function.

Table 2. Column data

Bed dimensions (mm)	3.2 × 300
Approximate bed volume (mL)	2.4
Column efficiency (N/m)	> 43 000
Typical pressure drop over packed bed ¹	2.0 MPa ² (20 bar, 290 psi)
Column hardware pressure limit	5 MPa (50 bar, 725 psi)

¹ Determine the limit according to section *Setting column pressure limits*.

² At maximum flow rate at 25°C in water.

First time use

Before connecting the column to a chromatography system, make sure there is no air in the tubing and valves. Remove the storage/shipping device and the stop plug from the column, see section *Delivery/storage*. Make sure that the column inlet is filled with liquid and connect it drop-to-drop to the system. For maximum resolution on the column, minimize all dead volumes between the injection valve and the column as well as between the column outlet and the detector.

Note: *Buffer solution, column and system should be kept at the same temperature when operating.*

Prepare the column for first-time use as follows:

- Equilibrate with at least 2 column volumes (CV) of room tempered water at a flow rate of 0.04 mL/min. Be aware to lower the flow rate if run at lower temperature.
- Determine the column specific maximum pressure according to section *Setting column pressure limits*.
- Equilibrate with at least 2 CV eluent at a flow rate of 0.075 mL/min.
- It is recommended to perform a column performance control for future comparisons. See section *Column performance control*.

Table 3. Flow rate limits and recommendations

Temperature		Flow rate (mL/min)
20°C to 25°C	Recommended flow rate, water	0.075
	Maximum flow rate, water	0.150
	Maximum flow rate, 20% ethanol	0.075
	Maximum flow rate, 10% glycerol	0.075
4°C to 8°C	Maximum flow rate, water	0.075
	Maximum flow rate, 20% ethanol	0.035
	Maximum flow rate, 10% glycerol	0.035

Note: *Most water-based buffers can be considered to be similar to water, for example phosphate and Tris buffers.*

Note: *When running viscous samples (for example containing glycerol) it is important to lower the flow rate, see recommendations above.*



**NOTICE**

Make sure not to exceed the pressure limits of the column. This is particularly important when working at low temperatures, like in a cold room, or when the column is used with 20% ethanol or other viscous solutions. Decrease the flow rate according to Table 3. Set pressure limits according to section *Setting column pressure limits*.

Setting column pressure limits

There are two pressure limits to consider when running the column, the pressure drop over the packed bed and the column hardware pressure limit. The pressure drop over the packed bed differ for each column and the limit has to be individually set **as the column is packed to withstand the maximum flow rate**. Note that it might be different compared to the value noted in Table 2.

Exceeding any pressure limit may lead to collapse of the gel bed or damage to the column hardware. Increased pressure is for example generated when running/using one or a combination of the following parameters:

- Eluent or sample with high viscosity compared to water. This includes 20% ethanol.
- Low temperature compared to room temperature
- Modifications to the flow path, for example changing to thinner/ longer tubing

For optimal functionality it is important to know the pressure drops over different parts of your system and how they affect the column. All ÄKTA chromatography systems measure pressure at the system pump, p_{pump} (see Fig. 1). Some systems have additional pressure sensors located before and after the column, $p_{\text{pre-cp}}$ and $p_{\text{post-cp}}$.

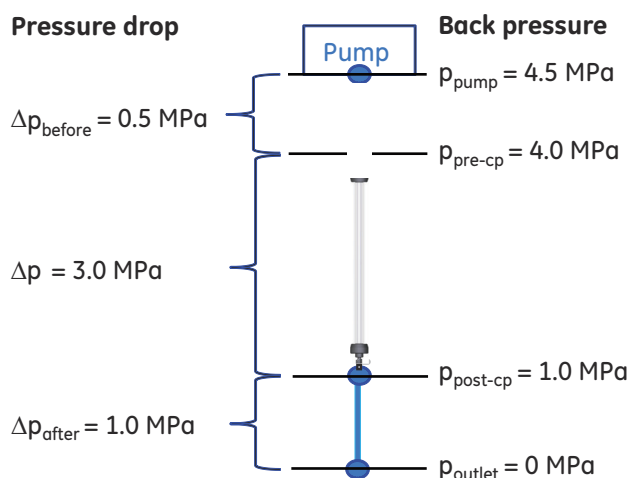


Fig 1. Example of the pressure in different parts of a system during run of a column.

- Δp_{before} does not affect the column.
- The pressure on the column hardware is the sum of Δp_{after} and Δp . Do not exceed the column hardware limit!
- Δp , is individual for each column and needs to be determined.

For more information, refer to the *ÄKTA laboratory-scale Chromatography Systems Instrument Management Handbook*.

How to set pressure limit for ÄKTA explorer, ÄKTA purifier, ÄKTA micro, and other systems with a pressure sensor in the pump

Determination of column specific pressure drop over the packed bed, Δp (see Fig. 1):

- 1 Δp_{before} is measured in absence of the column. Run the pump at maximum flow rate of the column in water and at the temperature for the experimental conditions. For exact values, see Table 3. Let the flow drip from the tubing that will later be connected to the column. Note the pressure as Δp_{before} .
- 2 Check that the *Pressure Alarm* in software is set to the same as the Column hardware pressure limit.
- 3 Connect the column to the system. Let the flow drip from the column outlet. The column should be equilibrated in water and at the temperature for the experimental conditions. Run the pump at the same flow rate as in step 1. Note the pressure value.
- 4 Δp is calculated as the pressure value in step 3 minus Δp_{before} . The Δp value will be used in step 8 below.

This Δp should not be exceeded at any temperature or using any liquid.

Setting pressure limit in method at your experimental conditions (intended system setup, flow rate, temperature and eluent):

- 5 Δp_{before} is measured in absence of the column. Run the pump at your intended flow rate. Let the flow drip from the tubing that will later be connected to the column. Note the pressure as Δp_{before} .
- 6 Instead of the column, connect a piece of tubing¹ to the system. Run the pump at the same conditions as in step 5. Note the pressure value as the total system pressure.
- 7 Δp_{after} is calculated as the total system pressure value noted in step 6 minus Δp_{before} , noted in step 5.
- 8 Calculate $\Delta p + \Delta p_{\text{after}} + \Delta p_{\text{before}}$
 - If this value is lower than the Column hardware pressure limit (see Table 2), set the pressure limit in your method as $\Delta p + \Delta p_{\text{after}} + \Delta p_{\text{before}}$.
 - If $\Delta p + \Delta p_{\text{after}}$ exceeds the column hardware pressure limit, reduce the flow rate or Δp_{after} . Repeat step 5-8.

You can now start your experiment!

¹Avoid thin and/or long tubing that will give back pressure.

How to set pressure limit for ÄKTA pure, without a column valve or with Column Valve V9-Cs (1 column)

p_{pre-c} (see Fig. 1) is automatically monitored by the system. This is the pressure signal to use in the following instruction. Do not use the *System pressure* signal. Note that the measured values include the tubing used to connect the column to the instrument.

Determination of column specific pressure drop over the packed bed (Δp):

- 1 Check that the *Alarm pre column pressure* in software is set to the same as the Column hardware pressure limit (see Table 2).
- 2 Connect the column to the system. Let the flow drip from the column outlet. The column should be equilibrated in water and at the temperature for the experimental conditions. Run the pump at maximum flow rate of the column in water and at the temperature for the experimental conditions. For exact values, see Table 3.

Note the pressure value.

The now measured p_{pre-c} value is the maximum pressure over the packed bed, Δp (*Delta pressure*).

- 3 This Δp value should not be exceeded at any temperature or with any liquid!

Setting pressure limit in method at your experimental conditions (intended system setup, flow rate, temperature and eluent):

- 4 Δp_{after} is measured in absence of the column. Run the pump at your intended flow rate.
- 5 Instead of the column, connect a piece of tubing¹ to the system, or bypass the column if connected to a valve. Run the pump at your intended flow rate.
The now measured value is Δp_{after} .
- 6 Calculate $\Delta p + \Delta p_{after}$.
 - If this value is lower than the Column hardware pressure limit (see Table 2), set the pressure limit in your method, *Alarm pre column pressure*, as $\Delta p + \Delta p_{after}$
 - If $\Delta p + \Delta p_{after}$ exceeds the column hardware pressure limit, reduce the flow rate or Δp_{after} . Repeat step 4-6.

You can now start your experiment!

Column Valve V9-C for ÄKTA pure and ÄKTA avant

Note: It is not recommended to use Valve V9-C due to large dead volume.

Column performance control

In order to detect any changes in column performance, it is very important that you make an initial column test with your particular system configuration. Note that the contribution from dead volumes in the instrument to band broadening will vary depending on system set-up and will influence column efficiency, thus the obtained efficiency on your system might be lower compared to the specifications in Table 2.

Column efficiency test

Column efficiency, expressed as the number of theoretical plates per meter, N/m , is calculated using the following equation:

$$N/m = 5.54 \times (V_R / W_h)^2 / L$$

where

N/m	=	number of theoretical plates/meter
V_R	=	volume eluted from the start of sample application to the peak maximum
W_h	=	peak width measured as the width of the recorded peak at half of the peak height
L	=	bed height (m)

Check the performance of the column using the following procedure:

Sample:	10 μ L 2% acetone (20 mg/mL) in buffer or water
Eluent:	Buffer or water
Flow rate:	0.1 mL/min, room temperature
Detection:	280 nm

Function test

As an alternative to the above efficiency test, check the column performance by running the function test shown in Fig. 2.

Sample:	1. Conalbumin (M_r 75 000) 1.5 mg/mL
	2. Ovalbumin (M_r 44 000) 4 mg/mL
	3. Carbonic anhydrase (M_r 29 000) 1.5 mg/mL
	4. Ribonuclease A (M_r 13 700) 3 mg/mL
	5. Aprotinin (M_r 6500) 1 mg/mL
	(All from Gel Filtration LMW Calibration Kit)

System	ÄKTA pure 25
Sample volume:	10 μ L
Eluent:	PBS (0.01 M phosphate buffer, 0.14 M NaCl, 0.003 M KCl, pH 7.4)
Flow rate:	0.075 mL/min, room temperature
Detection:	280 nm

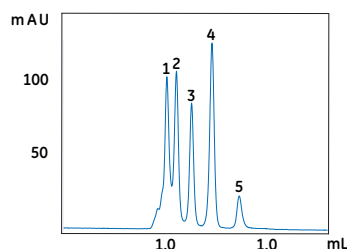


Fig 2. Typical chromatogram from a function test of Superdex 75 Increase 3.2/300.

¹Avoid thin and/or long tubing that will give back pressure.

Try these conditions first

Eluent:	PBS (0.01 M phosphate buffer, 0.14 M NaCl, 0.003 M KCl, pH 7.4)
Flow rate: (room temperature)	0.075 mL/min
Sample volume:	10 μ L

Equilibration is not necessary between runs with the same eluent buffer. Read the Section *Optimization* for information on how to optimize a separation.

Sample recommendations

Molecular weight (M_r):	3000 to 70 000
Protein concentration:	Up to 50 mg/mL, for higher resolution below 10 mg/mL.
Sample volume:	4 to 50 μ L
Preparation:	The sample should be fully soluble in the eluent used. Filter through a 0.22 μ m filter or centrifuge at 10 000 g for 10 min.

Note: High sample viscosity (high protein concentration or additives) can cause instability of the separation and the back pressure might increase. Dilute sample or decrease flow rate during sample application.

System recommendations

The small bed volume of the 3.2/300 column makes it sensitive to dead volumes in the system. It is recommended to use systems like ÄKTAmicro, ÄKTApurifier 10 and ÄKTA pure 25, or similar. Use short, narrow capillaries and avoid all unnecessary components in the flow path. Valve V9C (5 columns) is not recommended in the flow path due to large internal volume. For optimal configuration of ÄKTA pure 25 see Cue Cards in the Literature list in Section *Ordering Information*.

ÄKTA start is not compatible with Superdex 75 Increase columns due to too low maximum operating pressure.

ÄKTA avant is not recommended due to non-optimal dead volumes.

Note: Be aware of pressure limits.

Superdex 75 Increase 3.2/300 on different systems

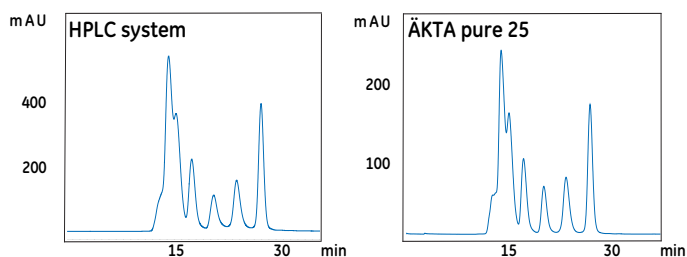


Fig 3. Comparison of protein separation on Superdex 75 Increase 3.2/300 on different systems, an HPLC system and ÄKTA pure 25.

Delivery/storage

The column is delivered with a storage/shipping device that prevents it from drying out. The column is equilibrated with degassed 20% ethanol.

If the column is to be stored for more than 2 days after use, wash the column with 2 column volumes (CV) of water and then equilibrate with at least 2 CV 20% ethanol.

Note: Use a lower flow rate for 20% ethanol.

For long term storage, we recommend that you connect the storage/shipping device according to section *How to connect the storage/shipping device* for long term storage.

How to remove the storage/shipping device



- 1 Push down the spring-loaded cap.
- 2 Remove the locking pin.
- 3 Release the cap and unscrew the device.

How to refill the storage/shipping device



- 1 Connect a syringe or pump to the storage/shipping device and fill with 20% ethanol over the mark on the tube. Remove the syringe or connection to the pump.
- 2 Tap out air bubbles and push the plunger to the mark on the device.

How to connect the storage/shipping device



- 1 Fill the column inlet and luer connector with 20% ethanol and connect the filled storage/shipping device drop-to-drop to the top of the column.
- 2 Mount the spring-loaded cap (2) and secure it with the locking pin (3).

Choice of eluent

Select an eluent that ensures the sample is fully soluble. Also try to choose an eluent that will simplify downstream applications. For example, if the proteins/peptides are to be lyophilized, a volatile eluent is necessary. Since ionic interactions can occur with both acidic and basic proteins at very low salt concentrations, a recommended buffer is 0.01 to 0.05 M sodium phosphate, with additional 0.15 M NaCl, pH 7.4. Table 4 lists some useful eluent compositions.

Table 4. Useful eluent compositions

pH	Buffer/eluent	Properties/application examples
5.0	0.1 M ammonium acetate	Good solubility for some enzymes, e.g., cellulases. Volatile.
6.8	0.2 M sodium phosphate	Suitable for some antibody separations.
7.4	0.01–0.05 M phosphate + 0.15 M NaCl	Near physiological conditions.
7.8	0.15 M ammonium hydrogen carbonate	Suitable for some DNA and protein separations. Volatile. Should be used fresh.
8.0	0.1 M Tris-HCl, 0.001 M EDTA	Very good solubility for DNA and RNA.
8.6	6 M guanidine hydrochloride in 0.05 M Tris-HCl	Good UV-transparency. Suitable if there is a need to purify proteins under denaturing conditions.

Buffer additives	Properties/application examples
Up to 8 M urea (pH<7)	Good solubility for many components. Biological activity can be maintained at lower urea contents. Certain risk for carbamylation of proteins.
6 M guanidine hydrochloride	Molecular weight determinations of subunits.
0.1% SDS, Tween™ or similar	Good solubility for some proteins, e.g., membrane proteins. Make sure you equilibrate completely with the detergent solution. Thoroughly remove the detergent with, e.g., 70% ethanol before doing separations without detergent.
0.2 M arginine	Decreases tendency of aggregation.

Buffers and solvent resistance

De-gas and filter all solutions through a 0.22 µm filter. Install an on-line filter before the injection valve.

Note: *Buffers and solvents with increased viscosity will affect the back pressure. Reduce the flow rate if necessary. See Table 3.*

Long term use

Long term use refers to use where the resin is stable over a long period of time without adverse side effects on its chromatographic performance.

- All commonly used aqueous buffers, pH 3 to 12
- Urea, up to 8 M
- Ionic and non-ionic detergents, e.g., 1% SDS
- Guanidine hydrochloride, up to 6 M
- Isopropanol, up to 5%
- Dithiothreitol (DTT), up to 5 mM
- Acetic acid, up to 1M
- Sodium hydroxide, up to 0.5 M
- Methanol, up to 10%
- Acetonitrile, up to 10%

Short term use

Short term use refers to the use during regeneration, cleaning-in-place, and sanitization procedures.

- Acetonitrile, up to 30%
- Sodium hydroxide, up to 1 M
- Ethanol, up to 70%
- Methanol, up to 70%
- Isopropanol, up to 30%
- Hydrochloric acid, up to 0.1 M
- Trifluoroacetic acid, up to 1%
- Formic acid, up to 70%

Avoid:

- Oxidizing agents
- Non-filtered samples and eluents

Optimization

If your results are unsatisfactory, consider the following actions.

For more information, see also the Literature list in Section *Ordering information*.

Flow rate

Action: Decrease the flow rate.

Effect: Generally improves resolution.

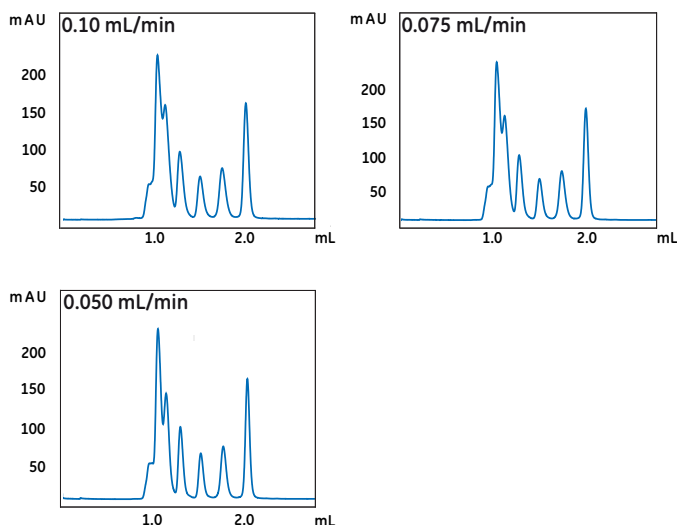


Fig 4. Comparison of protein separation on Superdex 75 Increase 3.2/300 at different flow rates.

Sample volume

Action: Decrease the sample volume.

Effect: Improves resolution.

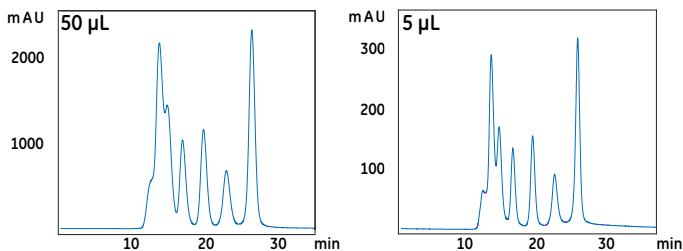


Fig 5. Comparison of protein separation on Superdex 75 Increase 3.2/300 using different sample volumes.

System dead volumes

Action: Decrease system dead volumes e.g., by using a suitable column valve (or no valve) and using short, narrow-diameter capillaries. Be aware that column bypass is not available without a column valve.

Effect: Improves resolution.

Note that in the comparison example below, separation without any column valve gave a small but noticeable resolution improvement (not shown). Be aware that column bypass is not available without a column valve. For further information, see Cue Cards in the Literature list in Section *Ordering Information*.

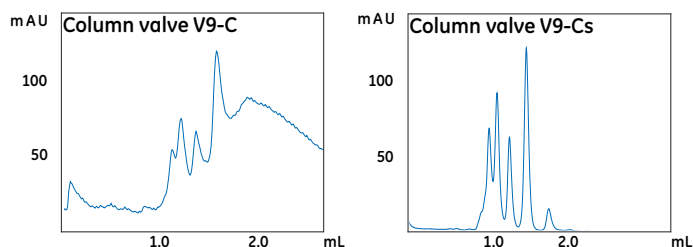


Fig 6. Comparison of protein separation on Superdex 75 Increase 3.2/300 with ÄKTA pure 25 using either column valve V9-C (5 positions + bypass) or column valve V9-Cs (single position + bypass). Note that column valve V9-C is not recommended to use with 3.2/300 columns.

For a comparison example of the effect of different diameters of capillaries: See the Instruction for Superdex 200 Increase 3.2/300 (Instruction 29027272). For more information, see also the Literature list in Section *Ordering information*.

Organic solvent

Action: Add organic solvent.

Effect: Increases solubility of hydrophobic compounds. Changes selectivity.

For more information, see the Literature list in Section *Ordering information*.

Cleaning-in-place (CIP)

Perform the following regular cleaning cycle after 10 to 20 separation cycles, or when otherwise needed.

Note: When performing CIP, reversed flow is recommended.

Note: For storage after CIP procedure be sure to rinse with buffer back to neutral pH before transferring to 20% ethanol.

Regular cleaning

- 1 Wash the column with 1 column volume (CV) of 0.5 M sodium hydroxide alternatively 0.5 M acetic acid at a flow rate of 0.02 mL/min.
- 2 Immediately rinse the column with 1 CV water followed by at least 2 CV of buffering eluent at a flow rate of 0.02 mL/min.

Before the next run, equilibrate the column until the UV baseline and pH are stable.

More rigorous cleaning

- Depending on the nature of the contaminants, the cleaning solutions in section *Buffers and solvent resistance* may be used. Always rinse with at least 2 column volumes (CV) of water after any of the cleaning solutions have been used, followed by 2 CV of buffering eluent.
- If column performance is not restored, wash the column with 3 CV 0.5 M arginine. Rinse with at least 2 CV water.
- If column performance is still not restored, fill the column with a solution of 1 mg/mL pepsin in 0.1 M acetic acid containing 0.5 M NaCl and leave overnight at room temperature or one hour at 37°C. After enzymatic treatment, clean the column according to the procedure described in the Section *Regular cleaning*.

Troubleshooting

Symptom	Remedy
Increased back-pressure over the column and/or loss of resolution	<p>Confirm that the column is the cause (see below). If so, clean it according to the procedure described in section <i>Cleaning-in-place (CIP)</i>.</p> <p>To confirm that the high back-pressure in the system is caused by the column, disconnect one piece of equipment at a time (starting at the fraction collector) with the pumps running. Check the pressure reading after each piece has been disconnected to determine the source of the back-pressure.</p>
Air in the column	<p>Note that small amounts of air will normally not affect the performance of the column. Run 3 to 4 column volumes (CV) of well de-gassed eluent in an <u>upflow direction</u> at a flow rate of 0.05 mL/min at room temperature.</p>
Issues with removing shipping/storage device, stopper or connector	<p>Carefully tighten the black end cap in both ends of the column by hand.</p>
Loose end cap	<p>Do not use the column in a system if the black end caps are loose. This is because the liquid could leak into the space between the inner column and the outer shell. Carefully tighten the black end caps by hand.</p>

Ordering information

Product	Quantity	Product code
Superdex 75 Increase 3.2/300	1	29148723

Related products

Product	Quantity	Product code
Superdex 75 Increase 10/300 GL	1	29148721
Superdex 75 Increase 5/150 GL	1	29148722
Superose™6 Increase 3.2/300	1	29091598
Superose 6 Increase 5/150 GL	1	29091597
Superose 6 Increase 10/300 GL	1	29091596
Superdex 30 Increase 10/300 GL	1	29219757
Superdex 30 Increase 3.2/300	1	29219758
Superdex 200 Increase 3.2/300 GL	1	28990946
Superdex 200 Increase 5/150 GL	1	28990945
Superdex 200 Increase 10/300 GL	1	28990944
Gel filtration LMW Calibration Kit	1	28403841
Gel filtration HMW Calibration Kit	1	28403842

Accessories

Product	Quantity	Product code
Fingertight connector, 1/16" male	10	18111255
Tricorn™ storage/shipping device	1	18117643

Literature

Document	Product code
Size Exclusion Chromatography, Principles & Methods	18102218
ÅKTA laboratory-scale Chromatography Systems	29010831
Instrument Management Handbook	
Procedure: Maintenance and cleaning of size exclusion chromatography columns	29140760
Cue Cards: Optimal configuration of ÅKTA pure 25 for small scale SEC	29181181

For local office contact information, visit
www.gelifesciences.com/contact

GE Healthcare Bio-Sciences AB
Björkgatan 30
751 84 Uppsala
Sweden

www.gelifesciences.com

GE, the GE Monogram, ÅKTA, Superdex, Superose and Tricorn are trademarks of General Electric Company.

Tween is a trademark of Croda Group of Companies.

All other third party trademarks are the property of their respective owner.

© 2016-2018 General Electric Company

All goods and services are sold subject to the terms and conditions of sale of the company within GE Healthcare which supplies them. A copy of these terms and conditions is available on request. Contact your local GE Healthcare representative for the most current information.

GE Healthcare UK Ltd
Amersham Place, Little Chalfont, Buckinghamshire, HP7 9NA, United Kingdom

GE Healthcare Europe GmbH
Munzinger Strasse 5, D-79111 Freiburg, Germany

GE Healthcare Bio-Sciences Corp.
100 Results Way, Marlborough, MA 01752, USA

GE Healthcare Japan Corporation
Sanken Bldg. 3-25-1, Hyakunincho, Shinjuku-ku, Tokyo 169-0073, Japan

