

**Recommended procedure for use of Storage/
Shipping Device with Tricorn™/HiPrep™ columns:**

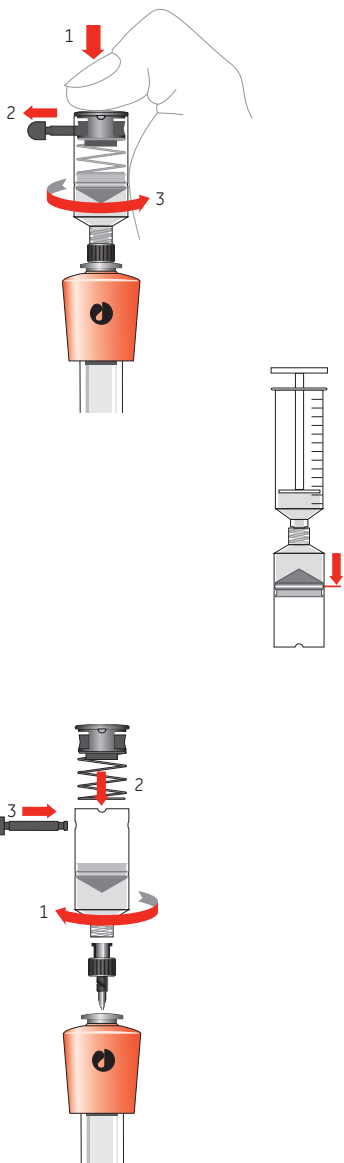


Fig. 1 Recommended procedure for use of storage/shipping device with Tricorn/HiPrep columns.

How to remove the storage/shipping device:

- 1 Push down the spring-loaded cap.
- 2 Remove the locking pin.
- 3 Release the cap and unscrew the device.

How to refill the storage/shipping device:

- 1 Connect a syringe or pump to the storage/shipping device and fill with 20% ethanol to a level over the mark on the tube (Fig 1). Remove the syringe or pump connection.
- 2 Tap out air bubbles and push the plunger to the level on the tube.

How to connect the storage/shipping device:

- 1 Seal the bottom unit of the column with a stop plug. To avoid any trapped air, fill the column inlet and luer connector with 20% ethanol and connect the filled storage/shipping device drop-to drop to the top of the column.
- 2-3 Mount the spring-loaded cap and secure it with the locking pin.

Ordering information

Designation	No. per pack	Code No.
Storage/shipping device	1	18-1176-43

Note: The Storage/Shipping device is delivered with Union Luer connectors to HiPrep/Tricorn columns and XK/HiLoad columns both old and new design.



Recommended procedure for use of Storage/Shipping Device with HiLoad™/XK columns:

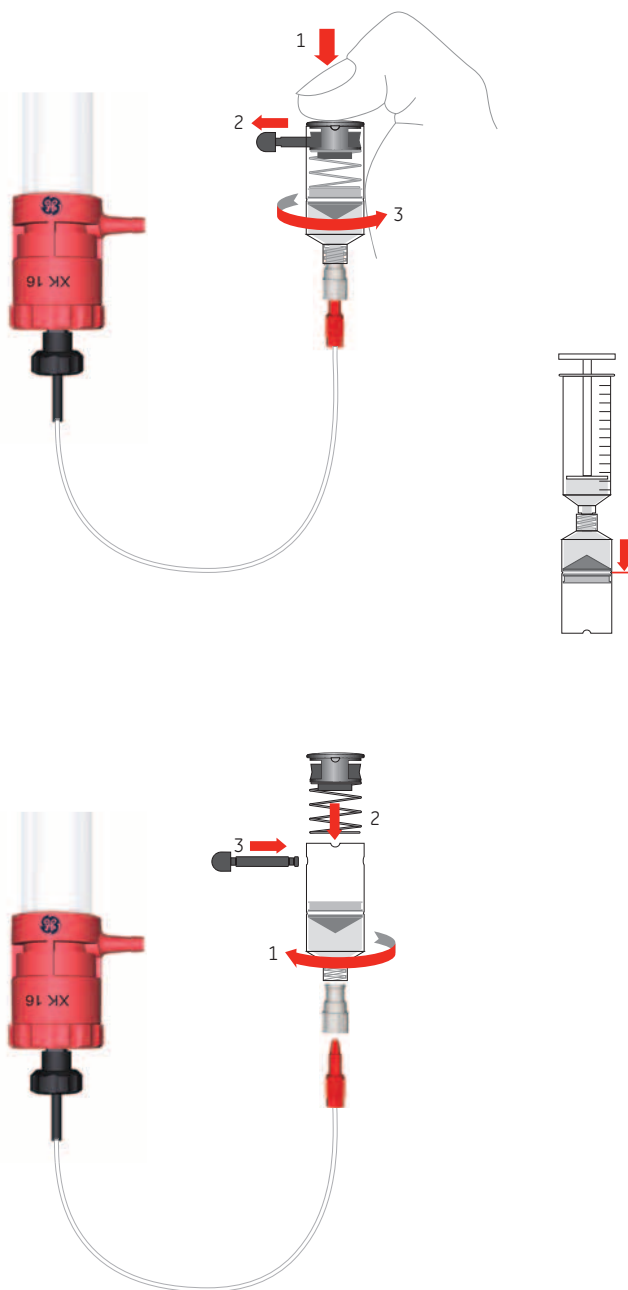


Fig. 2 Recommended procedure for use of storage/shipping device with HiLoad/XK columns.

How to remove the storage/shipping device:

- 1 Push down the spring-loaded cap.
- 2 Remove the locking pin.
- 3 Release the cap and unscrew the device.

How to refill the storage/shipping device:

- 1 Connect a syringe or a pump to the storage/shipping device and fill with 20% ethanol to a level over the mark on the tube, approximately 7 to 8 ml (Fig 2).
- 2 Tap out air bubbles.

How to connect the storage/shipping device:

- 1 Seal the top adapter tubing of the column with a stop plug. Connect the filled storage/shipping device to the bottom tubing.
- 2-3 Mount the spring-loaded cap on the storage/shipping device and secure it with the locking pin.
- 4 Remove the stop plug and await a slow flow through the column.
- 5 Re-seal the stop plug.

Note: Do not over-tighten the stop plug, to avoid damaging the tubing.

GE, imagination at work and GE monogram are trademarks of General Electric Company.

HiLoad, HiPrep and Tricorn are trademarks of GE Healthcare companies.

All third party trademarks are the property of their respective owners.

© 2001-2011 General Electric Company—All rights reserved.

First published Apr. 2011.

All goods and services are sold subject to the terms and conditions of sale of the company within GE Healthcare which supplies them. A copy of these terms and conditions is available on request. Contact your local GE Healthcare representative for the most current information.

GE Healthcare UK Ltd
Amersham Place, Little Chalfont, Buckinghamshire, HP7 9NA, UK

GE Healthcare Bio-Sciences Corp
800 Centennial Avenue, P.O. Box 1327, Piscataway, NJ 08855-1327, USA

GE Healthcare Europe GmbH
Munzinger Strasse 5, D-79111 Freiburg, Germany

GE Healthcare Japan Corporation
Sanken Bldg. 3-25-1, Hyakunincho, Shinjuku-ku, Tokyo 169-0073, Japan

For local office contact information, visit www.gelifesciences.com/contact

GE Healthcare Bio-Sciences AB
Björkgatan 30
751 84 Uppsala
Sweden

www.gelifesciences.com/protein-purification

